

VNCManager

Version 1.2

9 June 2014

Developed by:

The **WORKSPACE***SOLUTION*, Inc.

P.O. Box 490

Seaside, OR 97128

(503) 717-1821

ssherlock@workspacesolution.com

www.workspacesolution.com

Table of Contents

1. INTRODUCTION	1
2. TO GET STARTED	2
2.1. REQUIREMENTS	2
2.2. DOWNLOADS	2
2.3. SETUP	2
3. TO USE	5
3.1. VNC MANAGER CLIENT VERSION	5
3.2. VNC MANAGER FOR A COMPANY VERSION	5

1. Introduction

The VNC Manager is GUI (Graphical User Interface) tool to select and connect to a remote computer desktop using the VNC (Virtual Network Computing) technology. This tool manages connection information (computer IP addresses, network ports, and authentication information) necessary to access a remote computer system. To start with, VNC is a graphical desktop sharing program that uses the Remote Frame Buffer protocol (RFB) to remotely control another computer. It transmits the keyboard and mouse events from one computer to another, relaying the graphical screen updates back in the other direction, over a public or private network. VNC allows you to access and control desktop applications from just about anywhere. VNC has a widespread user base, from individuals to the world's largest multi-national companies, utilizing this technology for a range of applications. Once setup is done, the user would need the public IP (Internet Protocol) address (or private Lan IP if working within a company), the VNC port number, and user id with associated password for connecting to target computer. If the Public IP is not static, then user can setup a DDNS (Dynamic Domain Name System). DDNS has many useful purposes on the Internet. Here would be highly useful if you do not have to remember the static public IP address.

If you are only doing one or two computers at one or two locations, then you can memorize the access information or write the information into your wallet. But if you are accessing or supporting many computers, it can get a bit messy. This tool was developed to serve three functions:

1. Keep a list of all of the computers access information
2. Manage the list of computers
3. Execute the steps to make the remote connection

In addition, file encryption is support here. The VNC connection information file contains critical information to access remote computers through the RealVNC program. We feel this is necessary to protect the remote computers from authorized users.

This document supports two VNC manager program: Client and Company. The client program manage a group of computers by companies. The company version is unique to one company with number of computers to remotely access.

2. To Get Started

This section describes the tool and layout for two similar VNC GUI (Graphical User Interface) tools. One is for multiple clients (or customers or companies) with clients' own set of computers and the other is specific for one company with their collection of computers.

2.1. Requirements

You will need some kind of spreadsheet program. Most common is the MS Excel. There are other choices including free version such as Open Office and Libre Office. The big requirement is that the program must be able to save the information in a Comma Separated Value (CSV) file type.

2.2. Downloads

There are two self-extracting executable files to download VNCManagerClients.exe and the VNCManagerCompany.exe files from www.workspacesolution.com in the Tools group at the bottom of the www.workspacesolution.com home page. The company file is for single company hosting a number of VNC host. The client file supports multiple companies with associated VNC hosted computers. Once downloaded, run the self-extracting file into a working directory. Consider creating a directory named something like – VNCManager or VNCManagerComany. The self-extracting file contains the GUI program, a blank starter spreadsheet file with column headings, 32-bit version of VNC Viewer, 64-bit version of VNC RealVNC Viewer, 7-ZipPortalbe folder, and DP_Shredder. Both VNC viewers are from RealVNC (www.RealVNC.com).

Warning – Use the versions from the self-extracting file only.

Note – Today's computers are 64 bits so you may want to delay the x86 version.

2.3. Setup

After unzipping the VNCManager self-extracting file into a target folder, open the VNCTable.csv file with a spreadsheet program like Excel and begin populating the information. Start with replacing the sample content with the required information. A simple text editor such as Notepad can be use but must keep the commas separators, the title row unchanged, and continued to be saved as CSV file type. Below is an example with content. The content is only there to help you fill the necessary information in each rows and columns.

Item	Client	Computer	WAN IP	Ports	LAN IP	ID	Password	Win ID	Win PWD
1	CompanyA	computer1	xxx.xxx.xxx.xx1	5900	192.168.001.xxx	admin	pa55w0RD	user1	Password1
2	CompanyA	computer2	xxx.xxx.xxx.xx2	5901	192.168.001.yyy	admin	pa66w0RD	user2	Password2
3	CompanyA	computer3	xxx.xxx.xxx.xx3	5903	192.168.001.zzz	admin	pa77w0RD	user3	Password3
4	CompanyB	computer1	aaaaa.???dns.org	5900	010.010.020.aaa	admin	guessIT!	theuser	Password4
5	CompanyC	computer1	xxx.xx4.xxx.xx1	5900	010.050.010.aaa	admin	MyPa55word	anuser	Password5
6	CompanyD	computer1	xxx.x40.xxx.x11	5900	172.016.010.bbb	admin	PA55word!	me1	Password6
7	CompanyD	computer2	xxx.x40.xxx.x12	5900	172.016.010.ccc	admin	PA66word!	me2	Password7
8	CompanyD	comptuer3	xxx.x40.xxx.x13	5902	172.016.020.ddd	admin	PA77word!	me3	Password8
9	CompanyD	computer4	xxx.x40.xxx.x14	5901	172.016.020.eee	admin	PA88word!	me4	Password9

After populating the CSV file with real information, save the file as a CSV (Comma Separated Values) file type. **DO NOT rename this CSV file.** It is not necessary to put in the Win ID and Win PWD. These two columns are information only to help VNC user to manually log into Windows if that feature is required after establishing the VNC connection.

NOTE – Do not remove or alter the first row with the column names.

Figure 1 below shows the VNCManager UI with the sampled information.

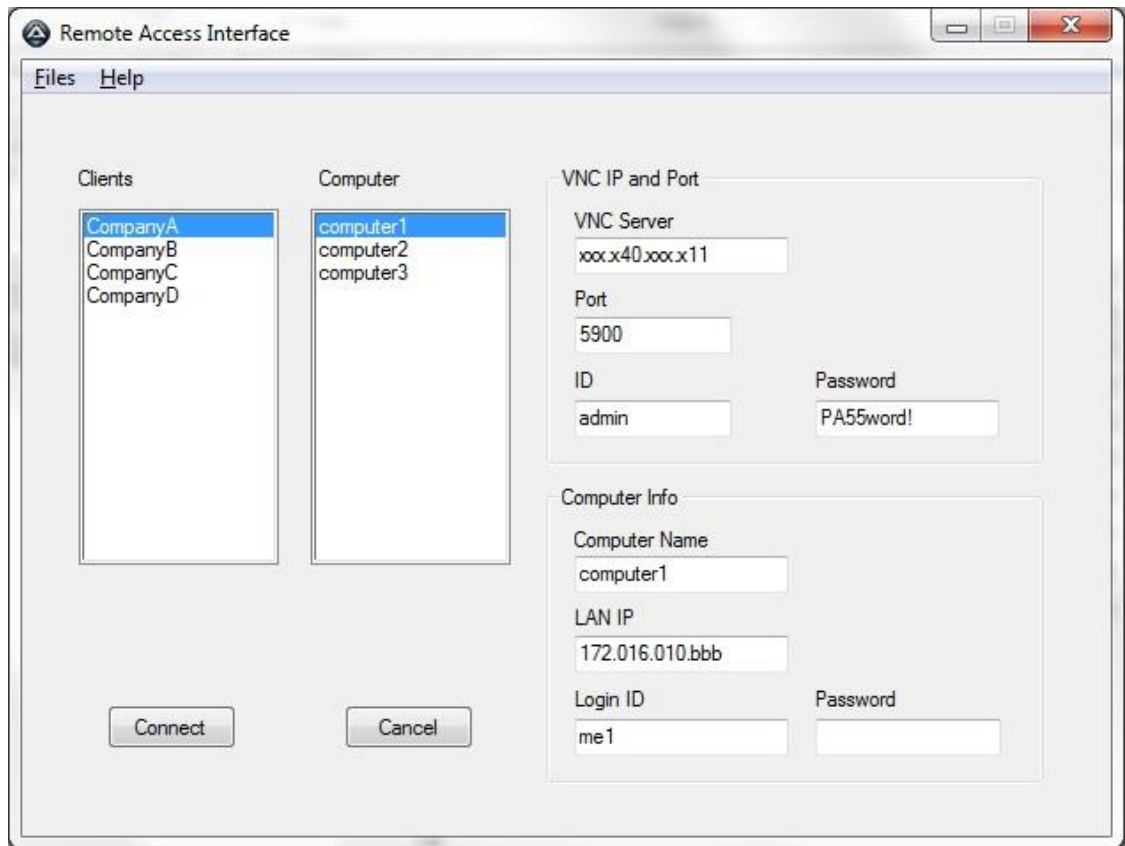


Figure 1 – Sample VNC Manager UI

The VNCMgrComany is similar to the VNCManager but will not have the Client column. See the sample table below.

Item	Computer	WAN IP	Ports	LAN IP	ID	Password	Win ID	Win PWD
1	computer1	xxx.x40.xxx.x11	5900	172.016.010.bbb	admin	PA55word!	me1	Password6
2	computer2	xxx.x40.xxx.x12	5900	172.016.010.ccc	admin	PA66word!	me2	Password7
3	comptuer3	xxx.x40.xxx.x13	5902	172.016.020.ddd	admin	PA77word!	me3	Password8
4	computer4	xxx.x40.xxx.x14	5901	172.016.020.eee	admin	PA88word!	me4	Password9

After populating the CSV file with real company computer information, save the file as a CSV (Comma Separated Values) file type. **DO NOT rename this CSV file.** It is not necessary to put in the Win ID and Win PWD. These two columns are information only to help VNC user to manually log into Windows after establishing the VNC connection.

NOTE – Do not remove or alter the first row with the column names.

Figure 2 below shows the CompanyVNCManager UI with the sampled information.

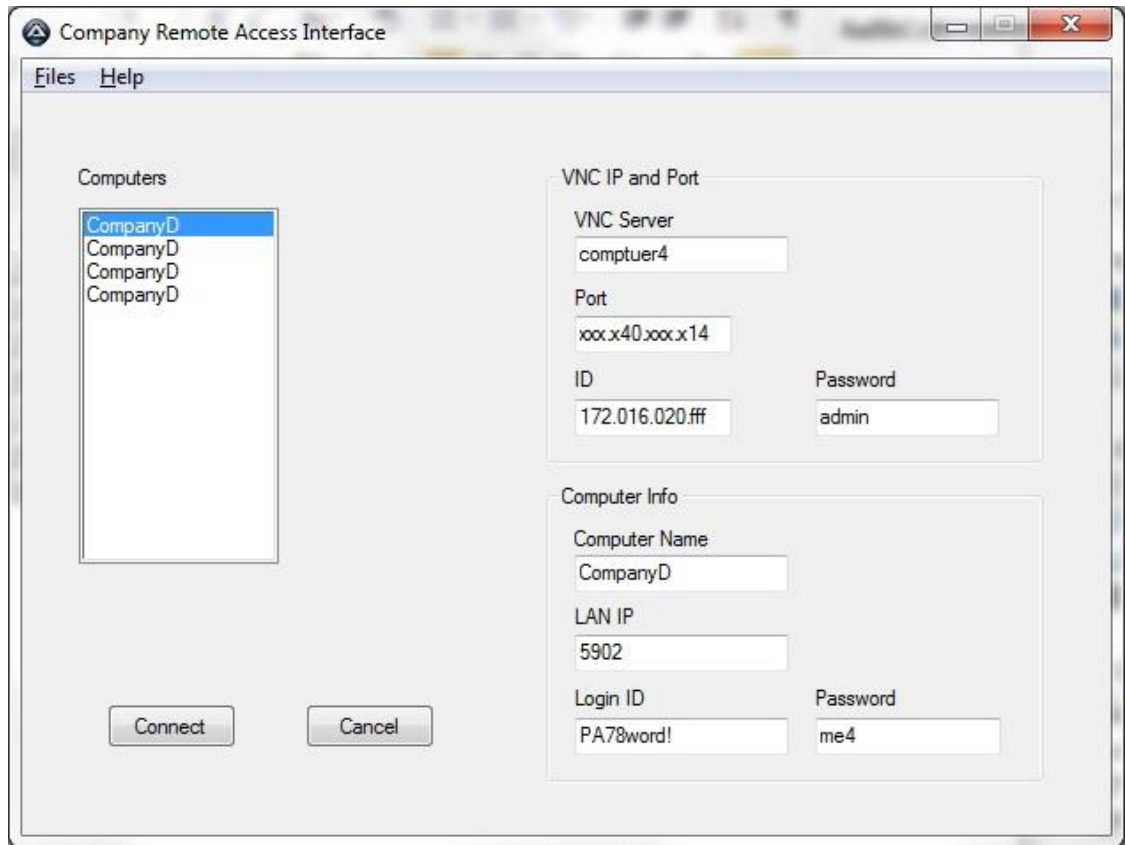


Figure 2 – Sample Company VNC Manager UI

3. To Use

3.1. VNC Manager Client Version

The usage steps are for the VNC Manager with the list of companies and its associated list of computers for each company selected. The use is pretty much simple and automated. Simply follow the steps below:

1. Launch the VNCManager program from a working folder you created when you downloaded the program.
2. The list of companies and list of computers will populate in the company and computer listbox on the left half of the VNC Manger interface.
3. The first company client and its first computer are selected by default. This will populate the VNC and computer information on the left side of the VNC Manager interface.
4. Select a company client in the left list box. This will update the computer list in the right list box. Note the default computer for that client will be the first computer on the list.
5. Select the desired computer to remote access. Again, this will update the VNC and Computer information.
6. When ready, click on the Connect button at the bottom left. This will pop up the VNC viewer and begin connecting process to the selected remote computer with the VNC login parameters assigned assigned for that computer. This will handle:
 - a. Connection failures if the computer is not on, the VNC host on the remote computer is turned off, or their router is not accessible.
 - b. If this is the first time remote access is being made to the selected computer.
7. If the computer to access is on, you will see a VNC window with the computer's desktop.
8. Begin working as if you are sitting in front of the computer.

3.2. VNC Manager for a Company Version

The usage steps are for the VNC Manager for one company with the list of computers. The use is pretty much simple and automated. Simply follow the steps below:

1. Launch the CompanyVNCManager program from a working folder you created when you downloaded this program.
2. The list of computers will populate in the computer listbox on the left half of the user interface.
3. The first computer will be selected by default. This will populate the VNC and computer information for this defaulted client and computer selection.
4. Select the desired computer to remote access. Again, this will update the VNC and Computer information.
5. When done selecting, click on the Connect button at the bottom left. This will pop up the VNC viewer and begin connecting process to the selected remote computer with the VNC login parameters assigned assigned for that computer. This will handle:
 - a. Connection failures if the computer is not on, the VNC host on the remote computer is turned off, or their router is not accessible.
 - b. If this is the first time remote access is being made to the selected computer.
6. If the computer to access is on, you will see a VNC window with the computer's desktop.
7. Begin working as if you are sitting in front of the computer.